



Twirl Mania

International Championships



February 14-17, 2014

Held at the

Walt Disney World® Resort

Where Batons Make Magic!



Follow us on



@twirlmania



A Spectacular journey with the Sport of Baton during the Twirl Mania International Championships at the *Walt Disney World Resort*® and the *ESPN Wide World of Sports Complex*

Where Stars are Born...



Men's Masters

Gold Champion

Where
EVERY CHAMPION
was once a
CHALLENGER!



Collegiate Classic

Pre-Teen Gold Champion

Expect the Unexpected!
Twirl Mania

is very excited to present the 19th annual TWIRL MANIA Championships for twirlers everywhere, every organization, and every level. Your adventure begins at the #1 vacation spot in the world. A very meticulously detailed fun-filled event has been planned as you compete in the Spine Tingling Tournament for twirlers from around the World for International Grand Titles, publicity and recognition. We have flexible schedules so you can enjoy the parks, legacy TWIRL MANIA ALL STAR Twirl Offs & Strut Offs, Parades, Unique Awards with Awards Extravaganza and Scholarships \$\$, Great Shopping, Discount TM Packages, Clinics with the latest material and techniques presented by extraordinary instructors, Action & Set photos/Videos, Coach's Workshop, Collegiate & HS Classic, Invitational Twirl Mania Gold, & Showcases, Team & Corps International Championships and Performances, Coach & Choreographer of the Year Awards, with many new events continually added. Please make your Reservations Early to insure availability & discounts!



NEW....

TM Orientation for Coaches, Parents & Athletes 2/14 at the *ESPN Wide World of Sports Complex*, Arena level. Tour the HP Field House, learn the location of awards & score sheets tables, vendors, dressing rooms, set system, etc, plus question/answer session.

Plan now to be the **STAR** at Disney during Twirl Mania

The Magic Begins as YOUR TWIRL MANIA experience

reaches NEW heights at the *ESPN Wide World of Sports Complex*. In this new era of sports at the *WALT DISNEY WORLD® Resort*, everything is done the ESPN way. From cutting-edge broadcast technology to new top-flight events, athletes will walk in loving sports and walk out knowing sports love them back!

Open to Twirling Athletes Everywhere, Every Organization & Club, Every Age, and Every Level! Something for Everyone!

- International Championships for Solo Athletes, Teams, Corps, High School & Collegiate Classics, Sr. "C's", plus International Teams & Gold Invitational.
- Compete at the *ESPN Wide World of Sports Complex*
- Parades down *Main Street, U.S.A.*
- Clinics & Workshops with top clinicians
- Prestigious Twirl Mania Awards Extravaganza
- Spine Tingling Awards Extravaganza at *Disney's Hollywood Studios®*
- Thrilling Performances and Showcases at the *Walt Disney World®* Theme Parks.
- Discounted *Walt Disney World®* Theme Parks tickets and hotels for all participants, family and friends
- Scholarships and Cash Awards
- Online entry and credit cards accepted via PayPal & PayPal pay later.

FEBRUARY 14-17, 2014

Deadline: December 1, 2013 ~ Changes until: December 15, 2013

Good Luck Ads

See your Solo Athletes or Teams STARS in the TM Program Book

Unique Award for the 2014 "Best Ad"	1/4 Page	7.5 X 2.5	Horizontal	\$25.00
	1/2 Page	7.5 X 5.0	Horizontal	\$50.00
	3/4 Page	7.5 X 7.5	Horizontal	\$ 75.00
	Full Page	7.5 X 10.5	Horizontal	\$100.00
	Shout Out!	1 Line ~ 50 characters		\$5.00

Please send art (b/w in a .jpg or .gif format, copy ready to: TWIRLMANIA@AOL.COM)

Send payments: Twirl Mania ~ 1315 Artisan Avenue E ~ Celebration, FL 34747

Please identify your ad with contact information. Companies please call 321-939-3577 for rates

Highlights

- **SET SYSTEM** The Set System will be used throughout the event. Set numbers will be shown on the electronic score boards & program book along with the MC announcement. Please follow the Program Book and highlight your events for easy reference.
- **ACTUAL AGE** is your age during the Championships. If your birthday falls during the championships, that is your Actual Age.
- **ATHLETES MAY CHALLENGE UP... NO DOUBLE ENTERING please**
- **NO MAXIMUM** age limit ~ **ATHLETES MAY NOT** compete against themselves in the same team/age category.
- **CLASSIFICATION LEVELS:** Novice, Beginner, Intermediate, Advance or Elite is the same as your **own** organization.
- **ELITE:** Top 10 at your Nationals, National win or Elite classification in your organization. Each event is considered individually.
- **INDIVIDUAL STRUT DIVISIONS** for all organizations. End lanes will be used for I-Strut & FS Struts for distance
- **PAGEANT STRUTS...**athletes may use strut of their **choice**. Athletes should be able to adjust distance for I & FS Struts for Miss TM Pageant.
- **SALUTES OR COURTESY POSE**, both are acceptable
- **ALL MODELING** in costume, with or without baton, and all patterns are acceptable
- **MALES** may compete with females except for pageant . See Men's Masters division
- **TIMING** for solo starts with first movement after a salute or pose and ends on last movement, salute or pose
- **TIMING for teams/corps starts with first movement or salute and ends on last movement, salute or pose**
- **TEAM PROPS** Please see Disney regulations below and complete information on the Team/Corps link
- **MUSIC** for Strut, Parade, and Dance Twirl Solos, Men's Masters & Pee Wee Show. Downloaded on website
- **MUSIC** ..please bring your music **labeled with your name/event, age division, name of music** for each routine on a **separate CD queued to the beginning or an MP3**. Please bring backup copy. Your music only plays as good as it is recorded. Music / CD's may be tested 30 minutes prior to start of event.
- **WARM-UP AREA** for contestants preparing to compete (**within the hour**) is located on the 2nd level Auxiliary, west side. **No Lessons!!** Area will be monitored! Please be considerate to your fellow competitors.
- **A DETAILED DESCRIPTION** of all requirements and rules are available on the TM website Reference Directory

AWARDS HIGHLIGHTS

- **AWARDS TABLE & POSTINGS, and SCORESHEET TABLE** on the main level.
- **POSTED AWARDS & SCORESHEETS** must be picked up by 3:00pm on Sunday.
- **AWARDS EXTRAVAGANZA** Required prepaid credentials are included in your Disney Ticket purchased through TM to attend the Awards Extravaganza at the TM designated entrance gate. If you wish to enter the *Disney Hollywood Studios*® **PRIOR** to 7:00 pm, a park ticket is required.
- **AWARDS EXTRAVAGANZA** All Athletes, team and soloists **MUST** be in costume to receive awards on stage on Sunday evening. Athletes in 'street clothes' or 'sweat suits' will not be allowed to participate on stage or in the awards photos.
- **SCORE SHEETS PICK-UP AFTER EXTRAVAGANZA** will be distributed at the **conclusion of ALL awards**. Please remain seated and extend fellow competitors the courtesy they extended you. Score sheets will be distributed at the conclusion of the Extravaganza

Score sheets will be mailed if coach or parent supplies a self-addressed stamped envelope to the Registration / Info Table by 2/15/14

PARADE HIGHLIGHTS

- **NEW TEAMS** wishing to compete or perform in a Disney parade must send by mail or upload their videotape by **November 15, 2013**
- **PARADE DIVISIONS:** Juvenile, Junior, Senior, High School, Collegiate, Senior C Championships or Just for Fun, Non-competitive parade.
- **BEST IN DRESS** Parade Award is selected from competitive and non-competitive parade teams.
- **NO TWIRLING/COSTUMES** while walking through the *Walt Disney World*® Resorts Theme Parks, *batons must be in case, costumes covered*.
- **SOLOISTS PARADE** video for individuals parade routine is on the Solo Parade link. Fun and easy to learn.
- **AGE LIMITS:** Day: 8 years of age **Sorry no exception!** Night: 10 years of age **Sorry no exception!**
- **COMPLETE PARADE INFORMATION** on Solo and Team Parade links. Team will be pulled from parade if not conforming.

FACILITY HIGHLIGHTS

- **COMPETE AT THE ESPN Wide World of Sports Complex in two arenas.**
- **NO COOLERS or STROLLERS or TENTS** permitted inside the HP Field House.
- **NO FLASH PHOTOGRAPHY** please. **VIDEO TAPING** from the seats / stands **ONLY**.
- **DRESSING ROOMS** are available throughout the *ESPN Wide World of Sports Complex*. *Do not dress or leave items in hallways or seats*
- **ALL PROPS / EQUIPMENT** that touch the floor and bottoms of props and hard sole shoes must be padded or taped or they will not be permitted on the floor for performance. Teams / Directors will be held responsible for any damage done to the floor. Props must be able to fit in a standard size (36") single doorway. Please see complete prop requirements on the Team/Corp page.
- **NO SPECIAL EFFECTS**, This includes fire, smoke, hay, raffia, pyrotechnics, confetti, baby powder or any airborne substance, etc. **SAFETY NOTICE** states sharp objects may not be used in routines. Any object that might cause harm or endangerment to the performers or audience may not be used in any routine. **Immediate disqualification!**
- **SPECTATOR VIEWING** available on the second level of the HP Field House only. Please be courteous to other guests by not saving seats or leaving your belongings on unoccupied seats. Please note that unsportsmanlike conduct will not be tolerated. Authorities do not permit viewing on the first level by coaches or parents in order to keep path clear for athletes & Aux court walkways
- **FOOD & DRINK** are available throughout the HP Field House at the concessions stands, All-Star food court, and baseball stadium.
- **TWIRLING COMPANIES** will be on hand for all your twirling needs.

General Criteria

Twirl Mania relaxes all rules so athletes from everywhere around the world, every level, & every organization can compete on an even playing field with fairness and without changes to their routines. Twirl Mania entry forms can be paid with PayPal, Credit Card or Check ..US Funds Only

Easy On-Line Registration & Payment



CHECK

CURRENCY Exchange: www.currencyguide.com

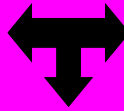
- NSF CHECKS \$50.00 charge NO REFUNDS after the TM deadline December 1, 2013!
- PAYPAL also offers a "Bill Me Later® program" that allows you to breakdown your TM entry fee into monthly payments to PAYPAL directly. Visit www.paypal.com for more information.
- CORRECT DIVISION Please be sure to enter the correct division you will be eligible for at Twirl Mania. If you are planning to enter competitions PRIOR to Twirl Mania and AFTER the TM deadline, please move to the next division as *NO CHANGES* can be made after the TM change deadline, December 15, 2013 In order to facilitate well organized championships for everyone, this rule must be enforced.
- An E-MAIL CONFIRMATION will be sent when upon your completed registration. You will have 3 days from receipt of confirmation or by 12/15/2013 which ever comes first to make corrections, otherwise entry will remain as registered. Please use current email for this important verification of events.
- DISNEY RELEASE WAIVER FORM must be received at the TM headquarters by the deadline to complete entry by TM deadline. Print copy online
- PROGRAM BOOKS will go on sale Thursday, 2/14/14 at the Early Bird Registration beginning at 2:30pm.

TWIRL MANIA REGISTRATION INFORMATION

Every athlete is REQUIRED to purchase one type of discounted Twirl Mania Walt Disney World® Resort Theme Park Ticket through Twirl Mania to participate.

Early Bird....Thursday, 2/14/2014

Disney's All-Star Resort
Celebrity Hall
2:30pm-5:30pm



Registration / Information

- Friday: 7:00am-3:30pm / 3:30-8:30pm
- Saturday: 7:00am-1:00pm / 3:30-8:30pm
- Sunday: 7:00am-9:00am / 9:00am-8:30pm

ESPN Wide World of Sports Complex

- Order Express Mail on your entry \$30.00 US ~ \$55.00 Non US ~ MUST order with entry.
- Arriving before 2/14/14 before 2:30pm and plan to use your tickets, YOU NEED TO ORDER Express mail with your entry.
- Package will be sent to your studio/residence 10 days or sooner prior to your departure date.

TWIRL MANIA INFORMATION

WHAT YOU NEED TO KNOW BEFORE FILLING IN YOUR TWIRL MANIA ONLINE ENTRY

- Participants under 18 must be accompanied by an adult with the same or greater discounted Twirl Mania Walt Disney World® Theme Park tickets.
- Walt Disney World® Theme Park tickets purchased through TM include admission to TM events at ESPN Wide World of Sports Complex, the Awards Extravaganza at Disney's Hollywood Studios® and permit entrance to the TM Championships without using Park days.
- A DISNEY SEASONAL PASS is not acceptable; ONLY the Disney ANNUAL PASS can be used for the Twirl Mania International Championships. (copy required)

EVERY PARENT, FRIEND, FAMILY, OR COACH / DIRECTOR

- Everyone is invited to enjoy the same discounts as the Twirl Mania athletes receive for the Walt Disney World® Theme Park Tickets, Walt Disney World® Resort, transportation and extended park hours.

SPECTATORS ONLY

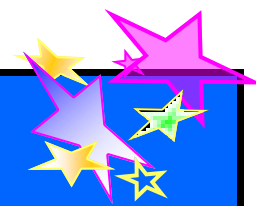
- To view only the Championships at the ESPN Wide World of Sports® Complex, SPECTATORS ONLY may purchase a Twirl Mania ESPN Wide World of Sports Complex admission at the gate for a day or the length of event (4-Days).

Day: \$32.00 Adult / \$20.00 Child

Length of Event (4-Days): \$48.00 Adult / \$32.00 Child

- IMPORTANT...The ESPN Wide World of Sports Complex only TICKETS DO NOT include admission to the Walt Disney World® Theme Park Tickets, Parades, Epcot® Collegiate Classic, Showcases/Performances, or Awards Extravaganza at Disney's Hollywood Studios®

Schedule of Events



THURSDAY 2~13~2014

EARLY BIRD REGISTRATION

*Disney's All-Star Resorts
Celebrity Hall
2:30pm-5:30pm*



TM Orientation for All New Coaches,
Parents, & Athletes
HP Field House
3:30pm & 4:00pm

*ESPN Wide World of Sports Complex
HP Field House AUXILIARY COURT*

*Complimentary Welcome Party & Mini Workshop for
Judges, Coaches, & Staff 5:30pm-8:00pm
Judges Meeting to follow 8:00pm-8:30pm*

*Fun, Food, Drinks, Prizes,
New & Old Friendships, Networking & Pixie Dust !*

FRIDAY 2~14~2014



REGISTRATION | INFORMATION DESK:

ESPN Wide World of Sports Complex 7:00am-3:30pm | HP Field House 3:30pm-8:30pm



Your events are scheduled in one of THREE venues below.
*ESPN Wide World of Sports Complex
HP Field House Arena, Auxiliary Court, or one of the Disney Parks.*

**HP Field House
ARENA**

**HP Field House
AUXILIARY COURT**

**HP Field House
OR
Walt Disney World® Resort Theme Parks**

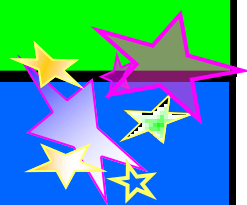
<p>Twirl Mania Gold Invitational Technical & Coordination Programs Pre-Teen, Jr. & Sr. Women, Men 8:00am-12:45pm 8:00am-11:20am Pre-Teen</p>	<p>Twirl Mania Championships Advance Freestyles 0-8, 9-12, 13-16, 17+ 8:00am-12:00pm</p>	<p>Twirl Mania Championships Mandatory Solo Parade Rehearsal & receive backstage credentials (outside HP Field House) 9:30am-10:30am</p>
<p>Twirl Mania Gold Invitational Group Photos (all) 1:00 pm Lunch 12:45pm-1:15pm</p>	<p>Twirl Mania Invitational Artistic Program Pre-Teen 12:30pm-2:00pm</p>	
<p>Twirl Mania Gold Invitational Artistic Program Jr. Women, Sr. Women, Men 1:15pm-4:45pm</p>	<p style="text-align: center;">For Complete Info Twirlmania.com</p>	
<p>Twirl Mania Championships Basic, Military, Best Appearing, & Pageant Basic and BA Modeling 5:30pm-8:30pm</p>	<p>Twirl Mania Championships Beginner Freestyle 0-8, 9-12, 13-16, 17+ 2:00pm-6:00pm</p>	<p>Twirl Mania & the Walt Disney World® Resort reserves the right to adjust schedule to accommodate everyone !</p>

All Arena events take precedence over the Auxiliary Court events !



A spectacle of THRILLS, CHILLS & EXCITEMENT for EVERYONE !

Often imitated...But Never duplicated...



SATURDAY 2~15~2014

REGISTRATION | INFORMATION DESK:

ESPN Wide World of Sports Complex 7:00am-1:00pm | HP Field House 1:00pm-8:30pm

**HP Field House
ARENA**

**HP Field House
AUXILIARY COURT**

**HP Field House
OR
Walt Disney World® Resort Theme Parks**

Twirl Mania Solo Championships
All Novice & Beginner, plus Intermediate (0-6, 7-9)
Struts, Solo, 2 & 3 Baton, Duets, Pageant Struts & Solos
8:00am-12:15pm

Floor/Judge Change / Performances
12:15pm-12:30pm

Twirl Mania Championships
Beginner ~ Advance HS Classic
Solo, FS Pairs Auxiliary & Special Solos
8:00am-1:00pm



Twirl Mania DAY Parade
Magic Kingdom® Park
Soloists & Teams 8+ years old
Juvenile Team Parade Championships
Teams for Fun, & Guest Groups
Report Time 1:15pm Splash Mountain® Gate
Step Off: 2:35pm Town Square
Pick up Time: 3:15pm
Three locations TBA

Twirl Mania Solo Championships
Intermediate 10+, All Advance & Elite
Struts, Solo, 2 & 3 Baton, Duets/Pairs, Pageant Strut, Solo & 2-Baton, School Solos, Men's Masters Solo & 2-Baton
12:30pm-5:45pm

Twirl Mania Collegiate Classic Championships
Preliminaries Solo & Teams
Senior "C" Teams
1:00pm-4:15pm

Twirl Mania NIGHT Parade
Magic Kingdom® Park
"Main Street Electrical Parade"
Soloists & Teams 10+ years old
Junior, Senior, HS, Collegiate & Senior "C" Championships, Teams for Fun
Report Time: 7:15pm Splash Mountain® Gate
Step Off: 8:30pm Town Square
Pick up Time: 9:00pm
Three Locations: TBA

Twirl Mania Championships Finals
Elite Solo, Elite Strut, Elite 2-Baton
6:00pm-

Twirl Mania Championships
Dance Twirl Solos Beg & Adv
Men's Masters
4:45pm-

SUNDAY 2~16~2014

REGISTRATION | INFORMATION DESK:

ESPN Wide World of Sports Complex 7:00am-9:00am | HP Field House 9:00am-8:30pm

Twirl Mania Team/Corps Championships
Twirl Mania Gold Invitational "Fab 5" Finals
Dance Twirl, Twirl, Half Time Show, Pom Pon, Dance Line, Drill **Teams** Show, Parade, Twirling, Flag/Guard & Production **Corps**
8:00am-6:30pm Arena & Auxiliary Court

Awards announced for Twirl, Pom, DanceLine, Jr High, Drill Teams at *ESPN Wide World of Sports Complex*

Twirl Mania Collegiate Classic Finals
Epcot® World Showcase
Group Photo & Performances
Awards
NEW **Report: 1:00pm**
Show: 1:30pm-2:30pm

Twirl Mania Awards Extravaganza
Disney's Hollywood Studios®
Indiana Jones Theater Doors Open 7:15pm Pre-Show 7:45pm
Awards Begin 8:00pm

Award Credentials required for admittance, If you wish to enter the Disney Hollywood Studios® prior to 7:00pm, a park ticket is required. See you there!

T M Gold Showcase
Epcot® World Showcase
Group Photos & Performances
NEW **Report: 2:30pm**
Show: 3:00-4:00pm
Twirl Mania Pee Wee Show Awards Extravaganza 7:30pm

MONDAY 2~17~2014

Disney Resorts



Stay at the Host Hotels

Walt Disney World® Resort Hotels!

Please call **(407) 938-4868** and identify yourself as a TM participant or spectator to get the Twirl Mania rate!

- **Disney's All-Star Music Resort** **\$ 134.00 (plus tax)**
- **Disney's All-Star Music Resort Suite** **\$ 255.33 (plus tax)**
- **Disney's Pop Century Resort** **\$ 143.00 (plus tax)**

For other Disney hotel discounts call: **321 939-3577**

Stay includes Disney Magical Express & Disney transportation on property.

TM hotel reservation lines will open September 2013

(407) 938-4868

Remember to book through TM reservations to receive discounts.

For other Disney hotel discounts call: **(321) 939-3577**



New



ADD-ON MEAL PLAN

2014 Dining Plan

- Includes 1 table service meal, 1 quick service meal and 1 snack per person, per night
- Includes 1 refillable beverage mug per person, per stay (refillable only at the home resort)
- Table service includes an entrée, dessert, one non-alcoholic beverage (or buffet)
- **Price is \$58.66 per adult and \$18.88 per child (age 3-9), per night**

Prices valid until December 31, 2014

***Prices are per person, per night, include tax and are subject to change without notice.**

Guidelines

- Disney's Dining Plan must be purchased for entire length of stay (for example, a 5-night stay would include 5 nights worth of meals) and for the entire party (ages 3+) on a reservation.
- Disney's Dining Plan must be paid for in full when the guest room reservation is booked.
- Unused entitlements are non-refundable.
- We strongly encourage advance restaurant reservations to ensure availability.
- You may book up to 6 months prior to arrival by calling 407-WDW-DINE.

Additional Guidelines

Disney Dining Plan is valid at dozens of locations (locations are subject to change)

- Dinner Shows, Signature Restaurants, Cinderella's Royal Table, Candlelight Dinner Packages, and Private Dining and Pizza Delivery require 2 Table Service Meals per person dining
- Children must order from the child's menu where available
- Meals are non-transferable between party members
- Meals expire at midnight on day of check-out
- Applicable taxes are included
- Gratuities are not included (except for Pizza Delivery, Private In-room Dining, Dinner Shows and at Cinderella's Royal Table)
Examples of snack choices: Frozen ice-cream novelty or popcorn or a 20 oz. soft drink

Disney Tickets



TWIRL MANIA PERFECT PACKAGES for Athletes include:

BIG SAVINGS Athletes ONLY	TM Price
1-Day/1-Park Perfect Package <i>(FL Residents Only)</i>	\$201.00
3-Day Park Hopper® Perfect Package	\$325.00
4-Day Park Hopper® Perfect Package Premium	\$382.00
5-Day Park Hopper® Perfect Package Premium	\$414.00
7-Day Park Hopper® Perfect Package Premium	\$465.00

**Up to \$300.00+
SAVINGS
with
Perfect Package**

*Savings determined by
of events entered ...*

All Perfect Packages include all solo events from Miss TM to Twirl Clinic, Parades, Showcase, Workshops, Performances, & Awards Extravaganza, plus
 ↓
 ESPN Wide World of Sports Complex admission for 4 days, plus tax.

All other events are A La Carte

- The 1 Day Perfect Package is a 1 Park Only for Florida Residents
- The 3 Day Perfect Package includes Park Hopper®
- The 4, 5, & 7 Day Premium Perfect Packages include Park Hopper® & Bonus Days to Disney's Typhoon Lagoon Water Park, Disney's Blizzard Beach Water Park, and DisneyQuest® Indoor Interactive Theme Park for the same number of days of package chosen.



FESTIVAL TICKETS for Athletes, Parents, Family, Coaches & Guests include:

BIG SAVINGS Teams, Family, Friends, Solo Athletes & Coaches	TM Price	Disney Parks & WiWS Price	YOU SAVE
Festival 1-Day/1-Park <i>(FL Resident Only)</i>	\$86.00	\$143.85	\$57.85
Festival 3-Day Park Hopper®	\$210.00	\$389.87	\$179.87
Festival 4-Day Park Hopper® Premium	\$267.00	\$434.60	\$167.60
Festival 5 Day Park Hopper® Premium	\$299.00	\$445.25	\$146.25
Festival 7 Day Park Hopper® Premium	\$350.00	\$466.55	\$116.55
Annual Pass <i>(Copy of AP front & back required with entry)</i>	\$ 55.00		

All Festival Tickets include Parades, Showcases, Performances, & Awards Extravaganza, plus
 ↓
 admission to the ESPN Wide World of Sports Complex for 4 days plus tax.

All Events are A La Carte

- The 1 Day Festival Ticket is a 1 Park Only for Florida Residents
- The 3 Day Festival Ticket includes Park Hopper®
- The 4, 5, & 7 Day Festival Premiums include Park Hopper® & Bonus Days to Disney's Typhoon Lagoon Water Park, Disney's Blizzard Beach Water Park, and DisneyQuest® Indoor Interactive Theme Park for the same number of days of package chosen.



Off Property Hotels



- Standard deluxe D/D \$46.00+ tax
- Kid's Suite \$66.00+ tax
- Two Room Suite \$76.00+ tax

Call 1-800-366-5437 and mention "Twirl Mania Rooms"

5678 West Irlo Bronson Memorial Highway ~ Kissimmee, FL 34746



- Deluxe Double Queen \$84.00+ tax
- Deluxe Kidsuite A \$99.00+ tax
- Deluxe Kidsuite B \$114.00 + tax

Call 1-866-808-8833 and mention "Twirl Mania Rooms"

13351 S.R. 535 Orlando, Florida 32821

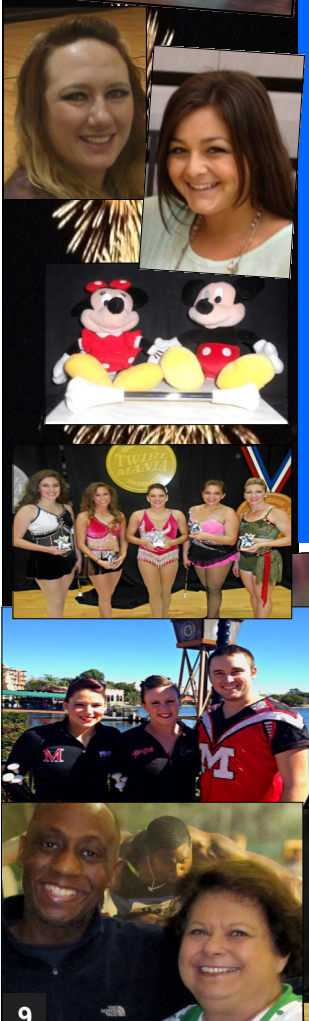


- Chic \$129.00+tax
- Captivating \$149.00+tax
- B-Enhanced Suites \$189.00+tax
- Master Suites \$279.00+tax

Click for reservations



Call 1-800-248-7890 and ask for the "Twirl Mania Block"



Transportation

**Flying to MCO Staying at a Walt Disney World® Resort
Your luggage "magically" appears in your room!**

Disney's Magical Express



Exclusively for Disney Resort

- This service lets your vacation start the moment you land at Orlando International Airport.
- Disney takes you from the Orlando airport to check-in, while your luggage goes straight from the plane to your room.
- Save on transportation costs, tolls, parking and more.
- Enjoy transportation to and from the airport in air conditioned motor coaches.
- When your vacation's over, you and your luggage are whisked back from your Disney Resort to the airport.
- All you do is attach the personalized tags we send you.
- Pet carriers are not included.

Transportation *DURING* Twirl Mania

- **Disney Transportation** with Disney hotel stay or Disney TM Ticket. See Disney website for routes.
- **Optional Twirl Mania Transportation Saturday & Sunday.** Service may be purchased between Disney's All-Star Music Resort / Disney's / Pop Century Resort 2/15-16/2014 to ESPN Wide World of Sports Complex, Magic Kingdom® Park, Epcot®, Disney's Hollywood Studios®. Loop approximately every 30 min. Send with entry. \$42.00pp
- **Optional Twirl Mania Awards Transportation only.** Disney advises there is no Disney transportation after the Awards on 2/16/14 as Park is closed. This is subject to change by Disney. TM Awards Bus is available after 5pm for \$18.00pp from the ESPN Wide World of Sports Complex, Disney's Hollywood Studios® to Disney's All-Star Music Resort & Disney's Pop Century Resort.

Rental Cars



**Official Host for
2014 Twirl Mania International Championships**

For great rates book your rental start date before February 14th, 2014 to lock in same low rate and discounts for your entire rental period in Orlando.

**Year round discounts for all your competitive needs
Use CDP # 2012684**

**Plus enter this code when specifically registering for TMIC
Use CV # 022Q6547**

Reservations

Be sure to use the CDP# when registering for a rental car, as well as, to save with special meeting rates, please include the CV# when making reservations. Meeting rates include unlimited mileage and are subject to availability. Advance reservations are recommended, blackout dates may apply.
1-800-654-2240 | 1-405-749-4434 | www.hertz.com



Events

PARADE DOWN MAIN STREET, U.S.A.

A dream of a lifetime comes true as Twirl Mania SOLOISTS and TEAMS Parade down *MAIN STREET, U.S.A.* in the *Magic Kingdom Park®* performing for thousands of Disney guests. Competition or Fun!
Please reserve your spot with an email to TM. Complete details: www.twirlmania.com

DISNEY PERFORMANCES ~ Disney Performing Arts Workshops: Disney Dancin' and Disney Auxiliation

In addition to the TWIRL MANIA Championships' and the Disney Parades, Groups from around the world with (15+ members, 5 years and older) are invited to audition for a *Disney Performing Arts Workshops* at one of the Disney venues. For complete audition information call Twirl Mania at: (321) 939-3577.

Deadline: 12/1/2013 TM 2014 is President's Weekend so please apply early as space is limited!

DISNEY WORKSHOPS ~ Disney Dancin' or Disney Auxiliation

Workshops are taught by professionals from the *Walt Disney World® Resort*. The workshops are 2 1/2 - 3 hours .
Add a touch of Disney Magic to your group's performance. Call or email for more info.... 321-939-3577

TWIRL MANIA GOLD INVITATIONAL

Continuing the tradition started by TWIRLMANIA that all athletes can compete together, advance/elite athletes from around the World are honored for their Top 8 accomplishments at their Nationals. A special TMG INVITATION for these outstanding athletes will be mailed. Athletes unable to attend their Nationals may request to audition by video by calling TM

Technical ~ 1 Baton
Coordination ~ Multiple Batons
Artistic ~ Freestyle / Rhythmic
Prelims: Friday ~ Top 5 Finals: Sunday

TWIRL MANIA GOLD SHOWCASE

Advance/Elite competitors 12 and under qualifying in the Top 8 at their Nationals will receive an invitation to send a video to audition to perform in the TM Gold Showcase. Athletes unable to attend Nationals may submit a video audition tape by calling TM. The Showcase is held at Epcot Sunday.

Only 30 spots available; Must be entered in an ADV / Elite division at TM to compete

COLLEGIATE CLASSIC

Some Universities or Colleges may be #1 in Football or Basketball, but who will be #1 for TM's Collegiate Classic Line or Solo? Prelims: Saturday ~ Finals: Sunday

Collegiate Classic Solo: 2-3 minute musical selection should include University "Fight Song" and music of athletes choice

Collegiate Miss Twirl Mania: See Pageant info

Collegiate Classic Line: 2-5 minute musical selection should include University "Fight Song" and teams music of choice

HIGH SCHOOL CLASSIC

H.S. Classic Solo Beginner & Advance
2-3 minute musical selection should include HS "Fight Song" and music of athletes choice.

MISS TWIRL MANIA PAGEANT

*Collegiate Miss Twirl Mania (Elite only)
Elite: SOLO, STRUT, MODEL, 2-BATON
Novice, Beginner, Intermediate, Advance:
SOLO, STRUT, MODEL
(Novice Basic Strut)
Solo status determines division.
Solo breaks ties.
Modeling in costume! No interview

MEN'S MASTERS

3-Part Program: Solo, Multiple Baton, & Dance
Twirl Solo.
Junior & Senior divisions

BEST APPEARING

Model in costume, any pattern, with or without baton.

BASIC & MILITARY

Square pattern/box. Judged on score sheet, no re-struts. March music.

STRUT

There is a strut division for every organization.
Pageant strut is athletes choice!

SOLO, 2 & 3 BATON

Salute or Pose, gymnastics permitted

PAIRS / DUETS

Performed by 2 persons with 1 baton each

SPECIAL SOLO

Solo for our twirlers with special needs

SCHOOL SOLOS

Field routine, 1 baton and/or opt equipment.

FREESTYLE / RHYTHMIC

1 baton routine choreographed to music of your choice, no props.

DANCE TWIRL SOLO / MEDLEY

Interpretative dance twirl to TM music

FREESTYLE / RHYTHMIC PAIRS

Routine choreographed for 2 persons with 1 baton each. Music athletes choice, no props.

PHOTOGENIC

Photos must be sent with entry & picked Saturday afternoon. Vertical 5x7 Color or B/W. Please label photos with Name/Age

AUXILIARY SHOW SOLO

One or combo of:: Flag, Pom, Rifle, Sabre, Ribbon, Hoop, Batons, & hand held props.

DANCE SOLO

All Dance Styles

TWIRL OFF & STRUT OFF 2-BATON TWIRL OFF

The top 3 competitors in each Elite age division will Twirl & Strut Off at the prestigious finals Saturday evening.

ATHLETE'S WORKSHOP

Come learn with TOP clinicians!
Available to all TM athletes & coaches.

TEAMS / CORPS

Championships Titles, Parade Competition in the Parks, Disney Performances,

DANCE TWIRL TEAM
TWIRLING TEAM
HALF TIME SHOW TEAM
POM PON TEAM
DANCE LINE TEAM
HS CLASSIC
COLLEGIATE CLASSIC
DRILL TEAM
PRODUCTION CORPS
SHOW / THEME CORPS
PARADE CORPS
TWIRLING CORPS
FLAG / GUARD CORPS
PARADE COMPETITION
PARADE FOR FUN

Awards Ceremony & more.
Complete details:
www.twirlmania.com

Featuring

“ TM ORIENTATION ”

For NEW coaches, parents & athletes. Join us Thursday at 3:30 or 4:00pm at the *ESPN WWS HP Field House* inside the front door. A mini tour to see the location of Info, MC, Awards/Scoresheet Tables, Posting Boards, Dressing Rooms, Photographer, Disney/Vendor Stores, Concession/Food, First-Aid, + Q & A.

“ COACH OF THE YEAR ”

\$4,500.00 Bond, Special Award, 3 night hotel stay and a 3-Day *Festival Park Hopper® Ticket* for TM 2014! This ultimate award will go to the coach with the highest points accumulated from their student's wins at Twirl Mania 2014. Points will be counted for all Solo & Group events: 1st place 5 points, 2nd place 4 points, 3rd place 3 points, 4th place 2 points, 5th place 1 point. There must be 5 entrants competing per event to earn points. Even though Teams/Corps only place 1st-3rd, points will be accumulated for 4th and 5th place.

“ CHOREOGRAPHER OF THE YEAR ”

\$300.00 Bond plus a very special award for the coach with the most outstanding choreographed team or corps routine. The Choreographer of the Year will be judged on all segments of the routine including theme, choreography, music interpretation, creativity, quality, effective floor coverage, staging, technique, precision, perfection within the style, unison of teamwork, visual effects, audience appeal, general appearance including costumes, fit and cleanliness, showmanship and professionalism by the judging panel.

“ MOUSECARS ”

This coveted Mickey “MOUSECARS” Divisional award is presented to the highest 1st place Champion in each level Novice, Beginner, Intermediate, Advance, in the categories of Best Appearing, Basic, Military, Strut, Solo, Two & Three Baton, & Duets/Pairs. Elite:(only 3-Baton) Twirl Off, Strut-Off, & 2-Baton replace Mousecars. Judge's decision breaks tie.

“ TEAM SPIRIT CROWN ”

This prestigious award acknowledges the Champion team with the Best TEAM SPIRIT displayed by it's members supporting each other in their team and individual events.

“ BEST FOOT FORWARD SPORTSMANSHIP AWARD ”

Twirl Mania is looking for the EXCEPTIONAL Team/Soloist/Coach/Judge/Parent displaying an INCOMPARABLE sportsmanship good deed, helping hand, or act of kindness to peers. The Unique Award will be selected from letters of recommendation Emailed or mailed to TM and finalized by committees decision.

“INTERNATIONAL TEAM OF THE YEAR”

A team from EACH country in attendance to accumulate the highest total from their team/corps scores will be honored as their countries Twirl Mania's “International Team of the Year”.



MUSIC / VIDEOS

- **TM Music will be used for all Solo, Strut, Parade, Dance Twirl Solo, Men's Master and Finals events.**
Download: www.twirlmania.com
- **Basic & Military: March music**
- **All Teams & Corps, Rhythmic/Freestyle, FS Pairs, TMG, Showcase, Collegiate & HS Classic, Teams / Corps, and Auxiliaries will use athletes or teams own music.**
- **Solo Parade Videos and Pee Wee Show Videos can be downloaded at www.twirlmania.com**

SOLO AWARDS

Amazing 1st-5th Place Awards plus additional awards for:

- 16-20 Athletes 6th Place
- 21-25 Athletes 7th Place
- 26-30 Athletes 8th Place
- 31-35 Athletes 9th Place
- 36-39 Athletes 10th Place
- ~ Over 40 divided

MISS TWIRL MANIA PAGEANT

1st-5th Trophies, 6th-10th place Medallions
1st place: Banner, Bouquet, Disney Plush, & surprises.

SCHOLARSHIPS \$, Gold, Collegiate & HS Classic, Men's Masters, Teams & more unique awards on website.

UNIQUE Awards Make Memories
In addition, Endorsements from sponsoring Companies

Score sheets can be mailed if a coach or parent supplies a self addressed stamped envelope by 2/16/2014.

TEAMS / CORPS AWARDS

- **1st - 3rd Place Awards plus...**
- **\$100.00 Bond ~ the 1st Place Dance Twirl, Half Time, Pom, & Dance Line Teams**
(5 groups competing in division)
- **\$200.00 Bond~1st Place Show Corps** (3 groups competing)
- **\$200.00 High School Classic Line** (3 groups competing)
- **\$500.00 Collegiate Classic Line** (8 groups competing)
- **Additional Awards**
16-20 Teams 4th Place
21-25 Teams 5th Place
26-30 Teams 6th Place
- **PARADE Competition: 1st—3rd + 1st Place BEST IN DRESS**
- **TEAM OF THE YEAR & CORPS OF THE YEAR One of a kind Award**

Levels, Penalties, Age Groups, Time Limits

LEVELS

SOLOS Novice, Beginner, Intermediate, Advance & Elite

TEAMS & CORPS Beginner, Advance, Combined

GENERAL PENALTIES

DROP, 2-HAND CATCH, FALL, OUT OF STEP PENALTY .5

BREAK, OFF PATTERN, OVER/UNDER TIME PENALTY .1

UNSPORTSMANLIKE CONDUCT DISQUALIFICATION

SOLO AGE GROUPS

ACTUAL AGE

NOVICE, BEGINNER, INTERMEDIATE & ADVANCE:

0-6, 7-9, 10-12, 13-15, 16+, Sr "C"

ELITE: 7-9, 10-12, 13-15, 16-20, 21+

DUETS / PAIRS:

0-17, 18-28, 29+, Sr "C"

RHYTHMIC/FREESTYLE PAIRS:

0-28 Junior, 29+ Senior

RHYTHMIC/FREESTYLE,

DANCE TWIRL SOLO,

AUXILIARY SHOW SOLOS,

DANCE SOLO & PHOTOGENIC:

0-8, 9-12, 13-16, 17+

SCHOOL SOLO:

0-13, 14-18, Collegiate

HIGH SCHOOL CLASSIC | COLLEGIATE CLASSIC

9-12TH Grade | Enrolled in College

TWIRL MANIA GOLD SHOWCASE:

0-12 (by invitation audition)

TWIRL MANIA GOLD INVITATIONAL:

10-12 Pre-Teen, 13-16 JR Women, 17+ SR Women,

13+ Men ~ TMG age qualified at Nationals

MISS TWIRL MANIA PAGEANT: Determined by solo level

0-6, 7-9, 10-12, 13-15, 16+, Collegiate (Elite only)

MENS MASTERS

0-12 Junior, 13+ Senior

PEE WEE SHOW ~ Awards Extravaganza

4-7 Audition tape required

PARADES SORRY...NO EXCEPTIONS

Day: 8 years of Age / Night: 10 years of Age



SOLO TIME LIMITS

All Novice Events :30- 2:00 minutes

SOLO

Beginner 1:00-2:00 minutes

Intermediate 1:45-2:15 minutes

Advance / Elite 1:45-2:30 minutes

School Solo 1:30-2:30 minutes

Auxiliary & Dance Solo :30-1:30 minutes

All STRUTS

:30-2:30 minutes

2 - 3 BATON

1:00-2:00 minutes

MODEL/ BEST APPEARING

1:30 minute max.

DUETS / PAIRS

Beginner 1:30-2:00 minutes

Advance 2:00-2:30 minutes

RHYTHMIC / FREESTYLE

Beginner 1:00-2:30 minutes

Advance 2:00-3:00 minutes

DANCE TWIRL SOLO

Beginner 1:30 max minutes

Advance (approx per TM music)

FREESTYLE PAIRS

2:00-3:00 minutes

HS & COLLEGIATE CLASSICS

2:00-3:00 minutes

TWIRL MANIA GOLD INVITATIONAL

Technical (Solo) 2:00-2:30 minutes

Coordination (2, 3, & or 4) 1:00-2:15 minutes

Artistic (Freestyle) 2:00-3:00 minutes

TEAMS / CORPS AGE GROUPS

Actual Age

TEAM AGE

Tiny Tot: 0-6.99, Juvenile: 7-10.99, Junior:

11-14.99, Senior: 15+, Senior "C's" 50+

High School Classic

9th, 10th, 11, & 12th Grade

Junior High School Line

6th, 7th, & 8th Grade

Collegiate Classic

Members enrolled at University

CORPS AGE

Juvenile: 0-10.99, Junior: 11-14.99, Senior: 15+

PARADE TEAMS

Juvenile: 8-10.99, Junior: 11-14.99, Senior:

15+, High School, & Collegiate, Senior "C's"

TEAMS / CORPS

SIZE & TIME LIMITS

TEAM & CORPS SIZE

Small Team 3- 8 members

Large Team 9 and over

Corps 10 and over

Production 200 and over

TEAM & CORPS TIME LIM ITS

Teams 2:00 - 4:00 minutes

Collegiate 2:00 - 5:00 minutes

Corps 5:00 - 9:00 minutes

Production 20:00 minutes maximum

To determine the age division of your team / corps, add all members actual age (day of contest) and divide the total by the number of members on your team or corps.

A competitor can only compete in ONE team per age division PER each category.

Solo Entry

Twirl Mania 2014 SOLO Entry Form

DEADLINE: December 1, 2013 ~ Sorry... No Refunds or changes after deadline ~ Please Submit entry online !

1. Athlete Information

Please fill in completely!

First Name: _____ Last Name: _____ Actual Age: _____ Birth date: ___/___/___
 Address: _____ City: _____ St/Prov _____ Country: _____ Postal: _____
 Email Parent _____ Email Athlete _____ Phone: ___-___-____ Cell Phone: ___-___-____
 Coach: _____ Chaperone or Parent Attending: ^{First} _____ ^{Last} _____ Phone: ___-___-____
 Hotel: _____ Arrival / Departure: _____ Organization: _____ Male / Female _____
¹ Duet Partner Name: _____ Partner Actual Age: _____ ¹ FS Partner Name: _____ Partner Actual Age: _____
² Duet Partner Name: _____ Partner Actual Age: _____ ² FS Partner Name: _____ Partner Actual Age: _____
 Team Name: _____ Important for TM Team Spirit Crown College or University Name _____
 Solo Parade: None Saturday Day: 8+ Saturday Night: 10+ See suggested Parades online

2. Ticket Information

For Athletes

AND / OR

For Athletes, Parents, Coaches, & Guests

Twirl Mania Perfect Packages

Check or highlight package of your choice

- 1-Day/1-Park **FL Residents Only** \$201.00
 1-Day **DOES NOT** have a Park Hopper® Option
 3-Day Twirl Mania Perfect Pkg \$325.00
 4-Day Twirl Mania Perfect Pkg \$382.00
 5-Day Twirl Mania Perfect Pkg \$414.00
 7-Day Twirl Mania Perfect Pkg \$465.00

TM Perfect Packages Include:

All solo events highlighted in red, Choice of Festival Ticket, plus admission to the ESPN Wide World of Sports Complex for 4 days, Parades, Showcase, Workshops, Performances & Awards

Twirl Mania Festival Tickets

Fill in choice & # of tickets

Admission ALSO included to ESPN Wide World of Sports Complex for 4 days

Disney Festival Ticket, Park Hopper® & Premium Tickets	Qty	Price	\$
1-Day/1-Park Festival Ticket FL Residents Only		\$ 86.00	
3-Day Festival Park Hopper® Ticket		\$210.00	
4-Day Festival Premium Ticket with Park Hopper® Option		\$267.00	
5-Day Festival Premium Ticket with Park Hopper® Option		\$299.00	
7-Day Festival Premium Ticket with Park Hopper® Option		\$350.00	
4, 5, 7 Day Premium Tickets & 4,5,& 7 Day Perfect Packages includes Bonus: Extra Options ~ See Ticket page for GREAT Bonus Details			
ANNUAL PASS Copy of AP, front & back required with entry		\$ 55.00	
# 2 SUB TOTAL of Perfect Packages and/or Festival Ticket		\$ _____	

3. Events Included in PP

Circle or highlight only ONE per event with TM PP

Event \$

Miss Twirl Mania	Novice Beginner Intermediate Advanced Elite Coll	\$55.00
Men's Masters	Junior 0-12 Senior 13+	\$55.00
Best Appearing	Novice Beginner Advanced	\$18.00
Military	Novice Beginner Advanced SrC	\$18.00
Basic	Novice Beginner Advanced SrC	\$18.00
Strut X NBTA / CNBTA	Novice Beginner Intermediate Advanced Elite	\$25.00
Strut FS USTA / CBTF	Beginner Intermediate Advanced Elite	\$25.00
Strut I DMA / WTA	Beginner Intermediate Advanced Elite	\$25.00
Solo Level determines Miss TM	Novice Beginner Intermediate Advanced Elite SrC	\$25.00
2-Baton	Beginner Intermediate Advanced Elite	\$25.00
3-Baton	Beginner Advanced	\$25.00
Pairs/Duet Choose one with PP	Beginner Advanced SrC	\$20.00 ea
Twirl Clinic	Novice Beginner Intermediate Advanced Elite	\$45.00

4. Events A La Carte

Circle or highlight choices ...Not included in TM PP

Special Solo	Enter	\$15.00
School Solo	Age Group 0-13 14-18 College	\$20.00
Dance Twirl Solo	Age Group Beg / Adv 0-8 9-12 13-16 17+	\$25.00
Rhythmic / Freestyle	Age Group Beg / Adv 0-8 9-12 13-16 17+	\$35.00
Rhythmic / Freestyle Pair	Age Group 0-28 29+	\$20.00ea
Photogenic	Age Group 0-8 9-12 13-16 17+	\$18.00
Auxiliary Show Solo	One or combo of: Flag, Pom, Rifle, Sabre, Ribbon, Hoop, Batons Age Group 0-8 9-12 13-16 17+	\$20.00
Dance Solo	Age Group 0-8 9-12 13-16 17+	\$20.00
H.S. / Collegiate Classic	H. S. 9th-12th Beginner or Advance OR College With purchase of TM Perfect Package \$60.00	\$75.00 \$
TM Gold Invitational	Age Group 10-12 13-16 17+ Men 13+ With purchase of TM Perfect Package \$65.00	\$75.00 \$
TM Gold Showcase	Invitational Adv/Elite 0-12 Qualified at Nationals Top 8	\$15.00
PEE WEE Showcase@Awards	Show: Ages 4-7 Accepted by video audition 11/30/09	\$15.00

3 & # 4 SUB TOTAL Events \$

Download DISNEY WAIVER Form at www.Twirlmania.com and submit with entry !

5. TM Bus	Qty	Price	\$
TM Mascot Express Mail			
Bus Service 2/15-2/16, 2014 Disney All-Star & Pop Century Resort Only all day		\$42.00 Per person	

Please choose Weekend Bus Service OR Awards Bus Onlynot both.

Award Bus 2/16/2014 Disney All-Star & Pop Century Resort Only after 6pm		\$18.00 Per person	
Twirl Maniac Mascot		\$10.00 ea	

EXPRESS MAIL or Early Arrivals before 2/13/14 ! MUST BE ORDERED WITH ENTRY	US \$30.00 OR Non US \$55.00	
PROGRAM BOOK INCLUDE 1 per family		\$10.00

#5 SUB TOTAL \$

Disney Waiver signed & mailed
 Twirl Mania
 1315 Artisan Ave E ~ Celebration FL 34747
DEADLINE: 12/1/13

Total of 2, 3, 4, & 5 US FUNDS ONLY

TOTAL \$ _____

Please

ENTER ON-LINE with credit card or E-check ~ ENTER On-Line and mail check
 ENTER ON-LINE either way and help us streamline Twirl Mania! www.twirlmania.com

Team Entry

Twirl Mania 2014 TEAM / CORPS Entry Form

DEADLINE: December 1, 2013 ~ Sorry... No Refunds or changes after deadline ~ Please Submit entry online!

1. Team Contact Information

Please PRINT and fill in completely!

Team Name: _____ Coach: _____ Phone: _____ - _____ - _____ Cell Phone: _____ - _____ - _____
 Address: _____ City: _____ St/Prov: _____ Country: _____ Postal: _____
 Email: _____ Coach 2: _____ Coach 3: _____ Organization (s): _____
 Hotel: _____ Arrival/Departure: _____ Please include us to vie for the **TEAM SPIRIT CROWN AWARD**

Entry Instructions

Please complete **ENTRY FORM ON-LINE** to help streamline Twirl Mania **One Check Per Team**

- Complete Sections # 1 — # 6
- Complete Disney ticket order for all members, coaches, and families (except soloists ordering PP and their families~use Solo form)
- List all team members ~ full name, actual age, birth date and team events
- Indicate all members to be printed on Disney TM T-Shirt ~ First and Last Name ~ Alpha order by last name
- New Parade teams please submit a video along with Team Parade Roster 11/15/12
- Please send a completed, signed **DISNEY WAIVER** for each participant **WITH ENTRY** available in brochure or on TM website

2. Ticket Information

Order all tickets required for members, coaches & families

	Quantity	Price	\$
1-Day/1-Park Festival Ticket FL Residents Only	X	\$ 86.00	
3-Day Festival Park Hopper® Ticket	X	\$210.00	
4-Day Festival Premium Ticket with Park Hopper® Option	X	\$267.00	
5-Day Festival Premium Ticket with Park Hopper® Option	X	\$299.00	
7-Day Festival Premium Ticket with Park Hopper® Option	X	\$350.00	

All FESTIVAL Tickets also include 4-Day ESPN Wide World of Sports Complex admission

**Includes Bonus: 4, 5, 7 Days ~ Extra Options See Ticket page for GREAT Bonus details!

ANNUAL PASS Copy front & back required with entry. Entry fees A La Carte

X \$ 55.00

2 SUB TOTAL \$

3. Twirl Mania Bus, Awards Bus, Twirl Maniac Mascot, Express Mail

	Quantity	Price	\$
Bus Service 2/15 & 2/16, 2014 Only Disney's All-Star Music or Pop Century Resort all day	X	\$ 42.00pp	
Award Bus Service 2/16/2014 Disney's All-Star Music or Pop Century Resort Only after 5pm	X	\$ 18.00pp	
Twirl Maniac Beanie Mascot	X	\$ 10.00	
EXPRESS MAIL..... OR Early Arrivals before 2/13/14 registration. List all names: (teams and solos to be included in express mail)	US	\$ 30.00	
	Non US	\$ 55.00	

3 SUB TOTAL \$

4. Team Events:

Circle or highlight choices, one per team event per form
If entries warrant, divisions will be divided

		# of Members 3-8 Small ~ 9+ Large	\$
Dance Twirl Team	Beginner or Advanced	Tiny Tot, Juvenile, Junior, Senior, Collegiate, Senior "C"	
Twirling Team	Beginner or Advanced	Tiny Tot, Juvenile, Junior, Senior, Collegiate	
Half Time Show Team		Tiny Tot, Juvenile, Junior, Senior, Collegiate, Senior "C"	
Pom Pon Team		Tiny Tot, Juvenile, Junior, Senior, Collegiate	
Dance Line Team		Tiny Tot, Juvenile, Junior, Senior, Collegiate	
H. S. Or Collegiate Classic		Grade 9th - 12th Collegiate	
Junior High Team		Grade 6th - 8th	
Drill Team		Juvenile, Junior, Senior, Collegiate	
Production Corps		One division (200 members minimum)	
Show / Theme Corps		Juvenile, Junior, Senior	
Parade Corps	Taped or Percussion	Juvenile, Junior, Senior	
Twirling Corps		Juvenile, Junior, Senior	
Flag/Silks Guard Corps		Juvenile, Junior, Senior	

Total # of Members # _____ X \$10.00 per athlete per event = **# 4 SUB TOTAL \$**

5. Team Parade Championships:

Circle or highlight choices

Parade Competition	Juvenile, Junior, Senior, H.S., Collegiate, Senior "C"	# in group (s): _____	\$ 55.00 pt
Parade Non-Competitive	Juvenile, Junior, Senior, Senior "C"	# in group (s): _____	\$ 30.00 pt
PeeWee Showcase at Awards	Show: Ages 4-7 Accepted by video audition 11/30/12	# in group: _____ X \$15.00 ea	\$

6. Twirl Clinic, Coach's Workshop, Express Mail:

Twirl Clinic	Novice Beginner Intermediate Advanced Elite	# _____ x \$45.00 pp	\$
Coach's Welcome Party	Name (s)	# _____	Complimentary

5 & 6 SUB TOTAL \$

Download Disney Waivers at TwirlMania.com Disney tickets purchased for each athlete/families/guests
 for each member, sign, complete & attach with entry US FUNDS ONLY TOTAL of 2, 3, 4, 5, 6 TOTAL \$ _____

DEADLINE: 12/1/2013

Twirl Mania ~ 1315 Artisan Avenue E ~ Celebration, FL 34747

321-939-3577

Judges & Staff



Who's the Fairest of them All?



Twirl Mania International Judges / Staff Availability Form

Be a part of the Magic, Make a Difference, and enjoy TM, Disney, and the savings!

If you are interested in serving on the 2014 Twirl Mania Judges / Staff panel and are already planning to attend Twirl Mania, please submit your form (preferably ON-LINE) or by mail. You must be certified with your organization. Please submit a copy of your certification if you have not judged for TM before in the past. The selection and assignments will be confirmed by email January 2014 or before.

Name: _____
 Address: _____
 City: _____ ST/Prov: _____
 Country: _____ Postal Code: _____
 Phone: _____ Cell Phone: _____
 Email: _____ @ _____
 Organization: _____ Years Judged: _____

"A Complimentary Welcome Party"...
 Social and Mini Recharge Workshop for all judges, coaches, and staff will be held at *ESPN Wide World of Sports Complex* 2/14/2014 at **5:30pm**
 Brief Mandatory Judges meeting follows at 8:00pm. Collect your Judges folder and ticket for the weekend
Fun, Drinks, Food, Prizes, New & Old Friendships, Networking, & Pixie Dust !!

Choose Package New Perks, Packages & Sessions

Package 1 = 2 Session

- ESPN Wide World of Sport® Complex Ticket
- Complimentary "Welcome Party" / Workshop
- Meal before or after session in the Judges lounge
- Judge / Staff Fee

Package 2 = 4 Sessions

- 1-Day/1-Park Festival Ticket
- ESPN Wide World of Sports® Complex Ticket
- Complimentary "Welcome Party" / Workshop
- Meal before or after session in the Judges lounge
- Judge / Staff Fee

Package 3 = 6 Sessions

- 1-Day/1-Park Festival Ticket
- ESPN Wide World of Sports® Complex Ticket
- 3 Night Hotel Accommodations (quad accommodations with other judges/staff)
- Complimentary "Welcome Party" / Workshop
- Meal before or after sessions in the Judges lounge
- Judge / Staff Fee

Choose Sessions...Be sure sessions do not have time conflicts

Friday	Pre-Teen Gold	8:00am-11:15am &	12:30pm- 2:00pm	<input type="checkbox"/>
Friday	Adv Rhythmic/Freestyle Championships		8:00am- 12:30pm	<input type="checkbox"/>
Friday	Beg Rhythmic/Freestyle Championships		2:00pm- 6:00pm	<input type="checkbox"/>
Friday	Pageant Model, Best Appearing, Basic & Military		5:30pm- 8:30pm	<input type="checkbox"/>
Saturday	Novice, Beginner, (Intermediate 0-6, 7-9) Individual Championship Events		8:00am- 12:15pm	<input type="checkbox"/>
Saturday	Beg & Adv HS Classics Auxiliary & Special Solos Freestyle Pairs		8:00am- 1:00pm	<input type="checkbox"/>
Saturday	Collegiate Classic Prelims, Finals at Epcot® on Sunday		1:00pm- 4:15pm 1:30pm- 2:30pm	<input type="checkbox"/>
Saturday	Dance Twirl Solo / Men's Masters DS		4:45pm-	<input type="checkbox"/>
Saturday	Intermediate (10+), Advance, Elite Individual Championship Events		12:45pm- 4:45pm	<input type="checkbox"/>
Saturday	Team Parade Championships Saturday Day Magic Kingdom® Park Saturday Night Magic Kingdom® Park		Approx times 2:30pm- 3:00pm 8:30pm- 9:00pm	<input type="checkbox"/>
Saturday	Elite Twirl, Strut, Two-Baton Finals (Must judge two sections to judge finals)		6:00pm- Approximate	<input type="checkbox"/>
Sunday	Team & Corps Championships A.M.		8:00am- 1:00pm	<input type="checkbox"/>
Sunday	Team & Corps Championships P.M.		1:00pm- 6:00pm	<input type="checkbox"/>
Monday	Workshop Clinician		9:00am- 11:30am	<input type="checkbox"/>
Friday	<input type="checkbox"/> Tabulation	<input type="checkbox"/>	8:00am-1:00pm	<input type="checkbox"/>
Saturday	<input type="checkbox"/> OR		1:00pm-6:00pm	<input type="checkbox"/>
Sunday	<input type="checkbox"/> Staff Assistant	<input type="checkbox"/>	4:30pm-9:30pm	<input type="checkbox"/>

I am available & plan on attending Twirl Mania 2014 and will fulfill my judging assignments. I request the Package & Sessions indicated. I understand judging assignments are on a first come basis & substitutions may occur to give you the required number of assignments.

Signature _____

Twirl Mania was designed as a Championship to publicize and promote twirling for ALL organizations and allow everyone to enjoy the #1 vacation spot. We want to utilize as many judges as possible allowing everyone enough free time to have fun with their family & students.

A very important / informative MANDATORY Judges Meeting will be held on Thursday evening at 8:00 pm. (details above). We look forward to getting your valuable input and ideas and introducing you to the Twirl Mania judging agenda.

Twirl Mania 1315 Artisan Avenue East ~ Celebration, FL 34747

please register EARLY to guarantee a position on the prestigious TM judge's panel.

Please fill Judges Form in ON-LINE to help streamline TM ~ Disney Waiver required

All Times are approximate ~ Please report 1/2 hour prior to session

TMIC Waiver



I agree to abide by the rules set forth in the Twirl Mania 2014 brochure and website regarding the TM Championships, Parades, Showcases, Performances, Workshops, and Awards Ceremony. I also pledge to promote good Sportsmanship throughout the Championships.

Please Print

ATHLETE'S NAME _____ DATE _____

ATHLETE'S SIGNATURE OVER 18 _____

PARENT / GUARDIAN for athletes under 18 _____

Solo Athlete Team Athlete Both Team

TEAM NAME _____

MAIL TO:

Twirl Mania ~ 1315 Artisan Avenue E ~ Celebration, FL 34747 (Fax not acceptable)

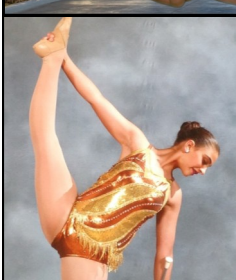
DECEMBER 1, 2013

Please make sure Athletes / Parents complete the Disney Waiver Form and the Twirl Mania Waiver Form to complete your entry.

Enter online at www.twirlmania.com

Come see Batons make ... *Magic!*





C-2MGO10HP

 10-8	 9-12	 13-16	 17-OVER
 2	 2	 2	 2
 3	 4	 3	 3
 4	 4	 4	 4
 5	 5	 5	 5

Shelby Starlets
Baton Twirling
Shelby County, Alabama
www.shelbystarletsbaton.com



What's New for 2014 ?

NEW

- **Deadline:** New Deadline December 1, 2013
- **Disney Meal Plan:** New for guests staying at Disney (see page 8)
- **Discount Car Rental:** New for TM & anytime during the year (page 10)
- **Orientation for New comers:** Thursday ESPN WWS 3:30 & 4:30pm (page 12)
- **Auxiliary Show Solo:** Revised event
- **Pee Wee Show:** New time & location 2/16/2014 7:45pm at Awards Extravaganza
- **Score Sheets:** Can be mailed out if coach/parent supplies a self-addressed stamped envelope to the Registration / Info Desk by 2/15/2014
- **Best Ad Award:** New Award for Best Ad in the TM 2014 Program Book (page 2)
- **TMG Showcase:** New Report & Show Time 2:30pm / 3:00pm-4:00pm
- **Collegiate Classic:** New Report & Finals Time 1:00pm / 1:30pm-2:30pm
- **Parades:** New 3 Pick up locations to be announced
- **Disney Ticket:** New design for Disney tickets

Twirl Mania Walt Disney World® Resort Theme Park tickets are **ALL-INCLUSIVE**

- All tickets must be purchased through Twirl Mania to participate. Parent/Chaperone ticket is required with Athlete's ticket.
- **ALL-INCLUSIVE:** In addition to your PARK admissions, *ESPN Wide World of Sports Complex* entrance for 4-days (the length of event) Awards Ceremony at *Disney's Hollywood Studios* (after 7:00pm) is included and DOES NOT use up park days. Performances, Parades, & *Epcot®* Collegiate Classic all require a park day.
- The Twirl Mania/Walt Disney World® Theme Park ticket is the **ONLY** way to attend Awards Ceremony.
- The ability to hop from park to park with the *Festival Park Hopper®* or *Premium Ticket*.
- Please be sure to sign your tickets on the back, record your ticket number & keep it in a safe place.
- Group will receive (one) 1-Day/1-Park admission **COMPLIMENTARY** with every 50 paid admissions. .
- Theme park tickets are good for the month of February, but must be used within 14 days of first use.
- The use of *Walt Disney World* transportation system includes motor coaches, monorails, and ferry boats, except after Awards Ceremony. Park is closed, YOU must supply your own transportation via TM bus, taxi or car.

To get the BEST DEAL for your athlete...choose a *Festival Starter*, *Park Hopper®*, or *Premium Ticket* and add you're A La Carte events entry price together. "**NOW**" compare the total with the Twirl Mania Perfect Package to see what is best for your athlete. The *Festival Starter*, *Park Hopper®*, or *Premium Ticket* with A La Carte entry fee or the TM Perfect Package?





©Disney



©Disney

Experience the magic and thrills of the *Walt Disney World*® Theme Parks!

FUN

In every corner



©Disney

Book Now



©Disney



©Disney

ENTER ONLINE
www.TWIRLMANIA.COM

STAY AT
Disney's All Star or Pop Century Resort!

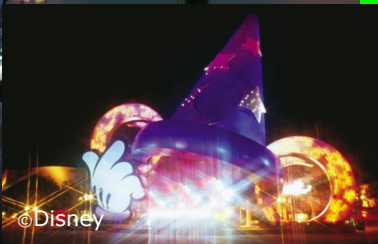
Extended Park Hours For Resort Guests
(on select days)



©Disney



©Disney



©Disney



©Disney



©Disney



©Disney

Call
(407) 938-4868
To book your hotel stay at the
Walt Disney World® Resort

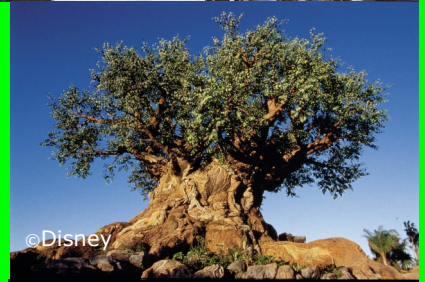
Group ID: Twirl Mania
Disney's All-Star Resort
\$134.00 plus tax

Disney's Pop Century Resort
\$143.00 plus tax

For discounts at other
Disney Resorts
Call **(321) 939-3577**



©Disney



©Disney

Score sheets will be mailed out if coach or parent supplies a self addressed stamped envelope to the Registration / Info Desk by 2/16/2014